



**TOPTEC®**  
Coat in the Concrete

Introducing a New Generation of  
Monolithic Floor Protection

Sealtec,  
always  
innovating



**45 years** experience

**Leaders** in concrete admixture technology

**Experts** in extreme condition construction

**Precision** of concrete floor tolerance

Continuous **innovation...**

# Trusted Partner

**Approved  
Constructor**



Governmental projects



משרד הביטחון

Ministry of Defense



Israel Electric

The Israel Electric Company (IEC)



Israel Chemicals (ICL)



Major industrial companies

**Exclusive  
Representative**



SEI Chemical USA

**SAUEREISEN**

Sauereisen USA Group



PAGEL®

Pagel Germany

**SCHOMBURG**

Schomburg Germany

**KINGfISHER**

Kingfisher UK



# Who the hell wants to hear actors talk?"

*Harry M. Warner, Warner Bros Pictures, 1927*





**Our  
goal  
today**

To present a revolutionary solution  
that challenges the current model of  
concrete floor protection and coatings

01

The Problem

02

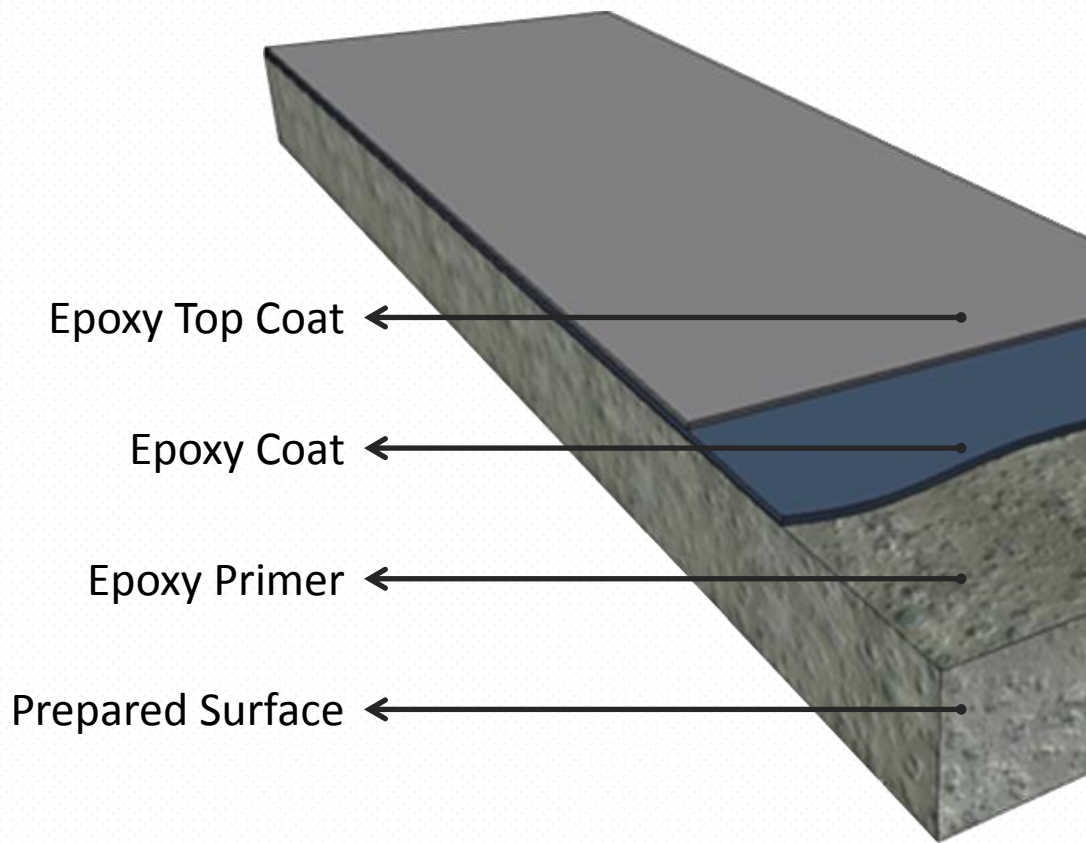
The Solution

03

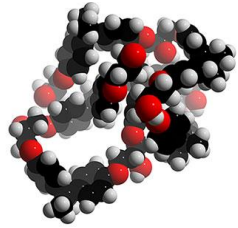
The Requirement



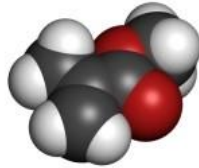
**Today, the majority of concrete floor coatings are applied to surfaces of cured concrete**



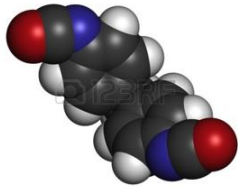
# And based on molecules E modulus



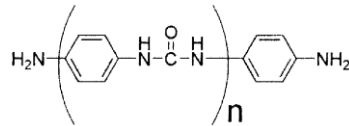
Epoxy | 27 GN/m<sup>2</sup>



Acrylics | 144 GN/m<sup>2</sup>

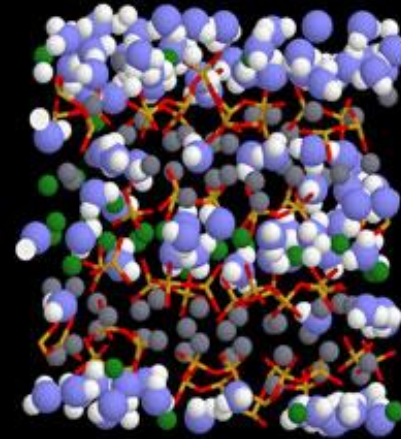


Polyurethane | 172 GN/m<sup>2</sup>



Polyurea | 164 GN/m<sup>2</sup>

Other hybrids




Concrete | 17 GN/m<sup>2</sup>



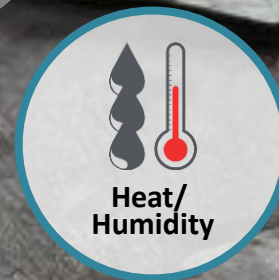
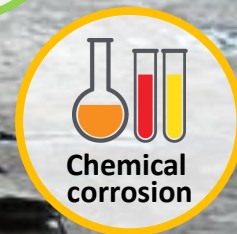
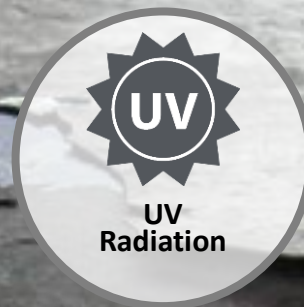
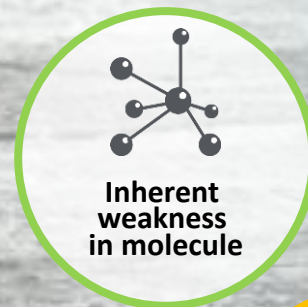


But, there are some serious problems with the current model



Peeling is  
**inevitable!**

# From multiple influences





A photograph of a construction site inside a tunnel. Several workers in blue overalls and white boots are working on the floor, which is covered with a layer of sand or gravel. The background shows the interior of the tunnel with various cables and equipment hanging from the ceiling.

**Installation  
is complex !**

**Risk of human error**

And  
very time  
consuming

Step 1 | Pour the concrete

Step 2 | Curing

**28 days** | until coating can be applied

Step 3 | Grinding

Step 4 | Priming

Step 5 | Apply Epoxy Coating

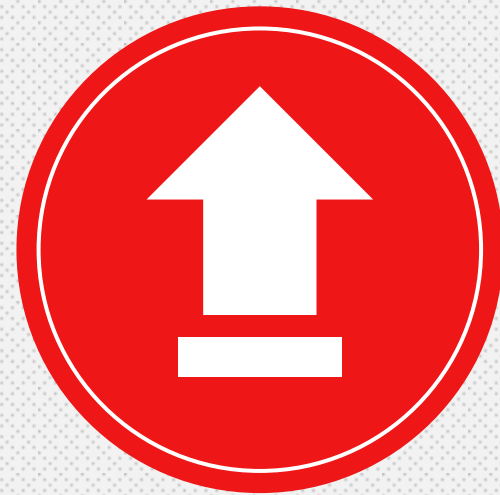
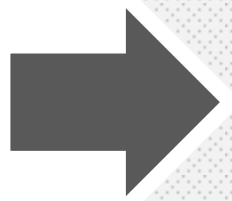
Step 6 | Apply Top Coating

**7 days**

**7 days curing** | until floor in service



Cost-inefficiency  
for customers



new marketing  
opportunity



01

The Problem

02

**The Solution**

03

The Requirement

# What if there was a **better** solution?



Coat will last  
as long as  
the concrete



Greater  
durability and  
performance



Faster  
application



More  
cost-effective



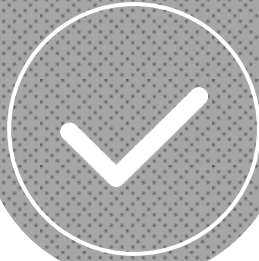
More  
economical

Introducing the revolutionary

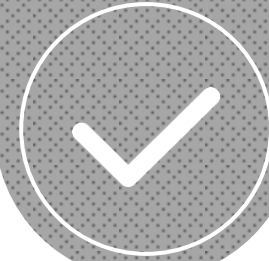
# TOPTEC®



Monolithic  
concrete  
casting



COAT IN THE  
CONCRETE



Employing  
unique TOPTEC®  
additive

# How it Works



# TOPTEC® elegant, beneficial innovation

Coating is in the  
concrete



No  
peeling !

Uses 'Venturi Effect'  
of helicopter  
application



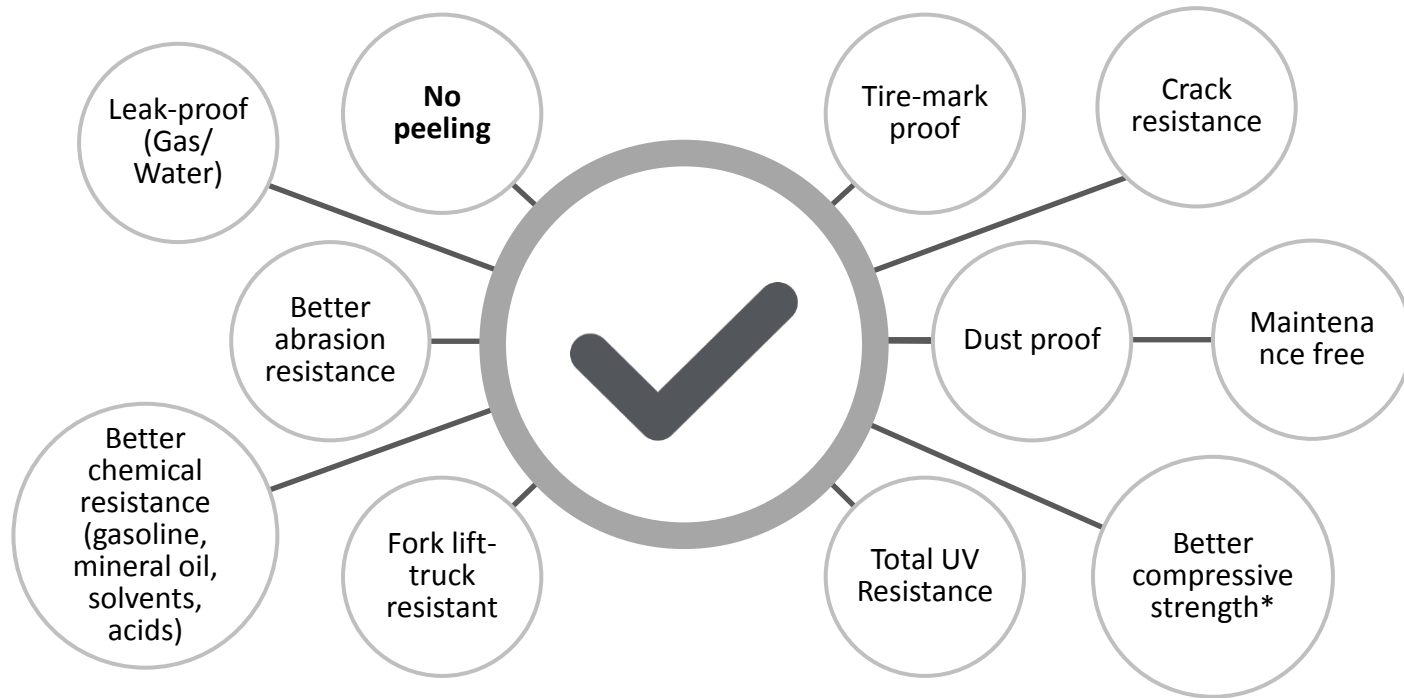
Floats and combines  
the resin with the  
upper concrete layer –  
chemically and  
physically!

Uses all existing  
components to smooth,  
shiny surface 'appearance'



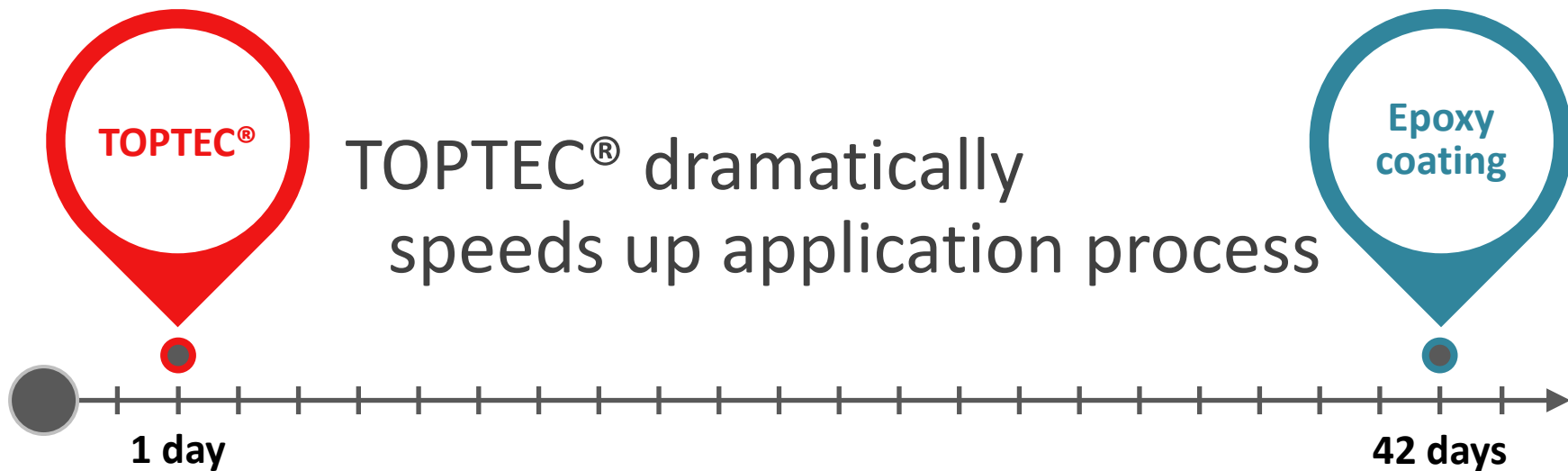
Water bleed  
Free Calcium hydroxide  $\text{Ca(OH)}_2$   
Iron Oxide pigment  $\text{Fe}_2\text{O}_3$   
Abrasion resistant aggregate

# TOPTEC® delivers superior performance

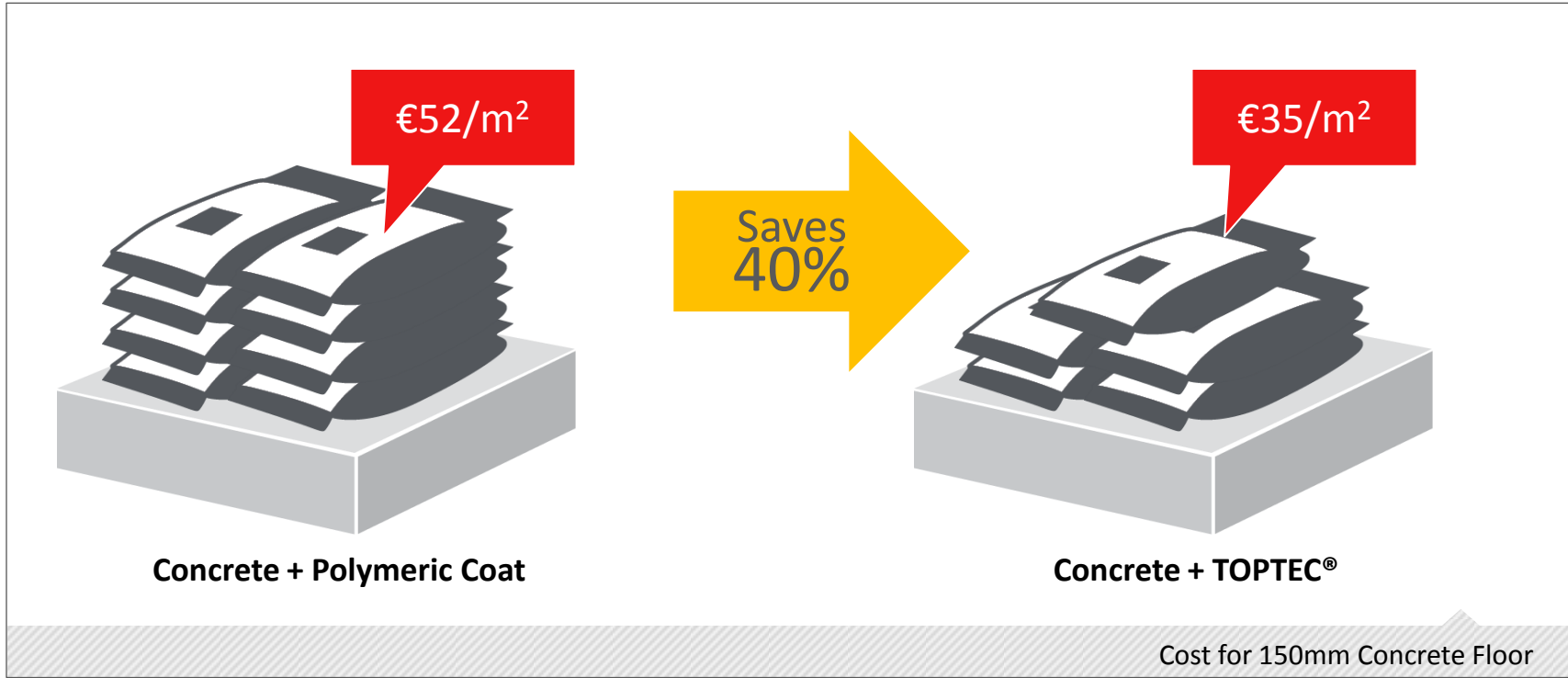


\* This secondary benefit has potential to open new market beyond floor coatings





# TOPTEC® - significantly more cost-effective





TOPTEC®  
is specifically intended  
for new constructions:

Industrial  
facilities

Factory  
floors

Airplane  
Hangars

Retail  
facility

Car parks

Run-ways

Ware-  
houses

And...

# TOPTEC®

An automatic choice, wherever concrete is cast...  
Improving combination of abrasive additive

01

The Problem

02

The Solution

03

The Requirement



Our/your  
chemical  
expertise can  
complete the  
solution



Formulation of TopTec® molecule





# Chemistry requirement



**99%**  
active agent



Ultra light:  
<0.90sg



Reacts with  
excess water  
only



Excellent  
compatibility  
all concrete  
components



## Summary

# TOPTEC® The New Generation of Concrete Floor Protection



- 01 Monolithic, coat in concrete
- 02 No peeling, no maintenance
- 03 Cost-effective, economical
- 04 Superior protection and longevity
- 05 Natural choice for global construction boom



The horse is here today,  
but the automobile is  
only a novelty - a fad."

*President of Michigan Savings Bank advising  
against investing in the Ford Motor Company*



Q&A



# TOPTEC®

Coat in the Concrete

# Thank You

TOPTEC® is a patent-pending system